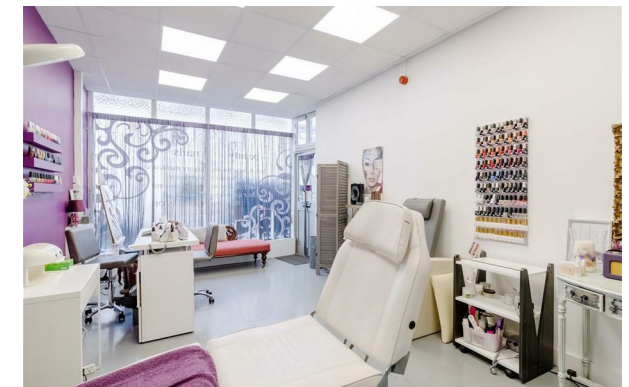




ASPIRE
RESIDENTIAL



27 Rowlands Road, Worthing, West Sussex, BN11 3JJ

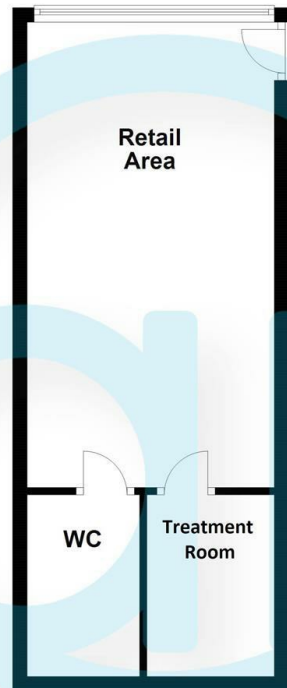
£10,000 Per Annum

- Available Immediately
- Popular High Street Location
- EPC - C
- Potential To Be Sold As A Going Concern
- New Lease Terms
- Town Centre Location
- Rent £10,000 P/A

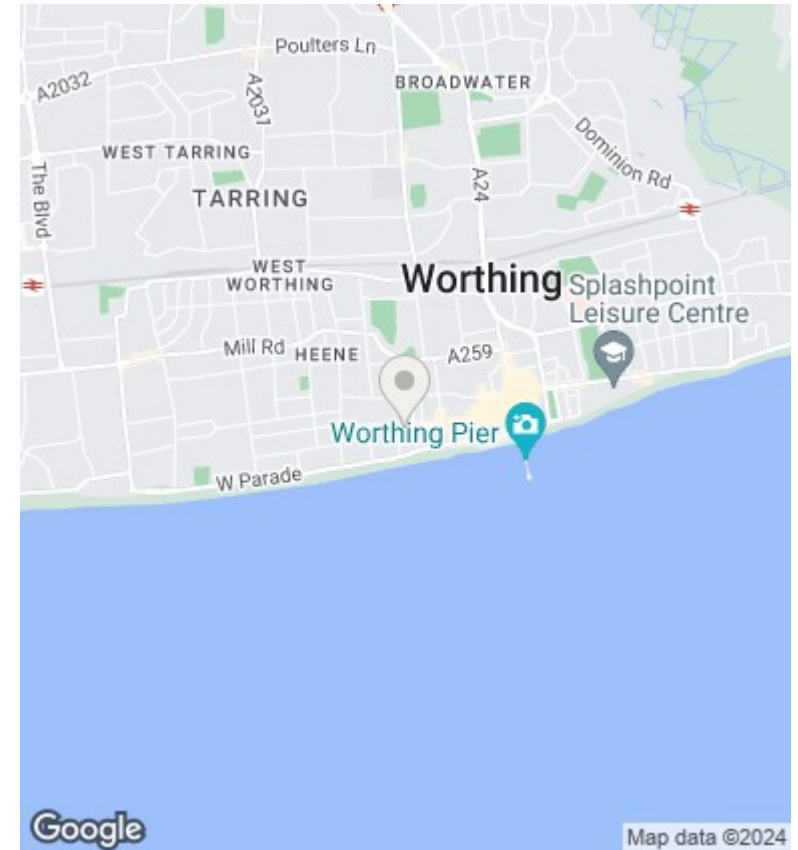
Unit 1, 28 Goring Road, Worthing, BN12 4AD
01903 259961

info@aspireresidential.co.uk
<https://www.aspireresidential.co.uk/>

Floor Plan
Approx. 30.6 sq. metres (329.2 sq. feet)



Total area: approx. 30.6 sq. metres (329.2 sq. feet)



Directions

Viewings

Viewings by arrangement only. Call 01903 259961 to make an appointment.

Council Tax Band

EPC Rating:

Energy Efficiency Rating		Current	Potential
<i>Very energy efficient - lower running costs</i>			
(92 plus) A			
(81-91) B			
(69-80) C			
(55-68) D			
(39-54) E			
(21-38) F			
(1-20) G			
<i>Not energy efficient - higher running costs</i>			
England & Wales		EU Directive 2002/91/EC	